

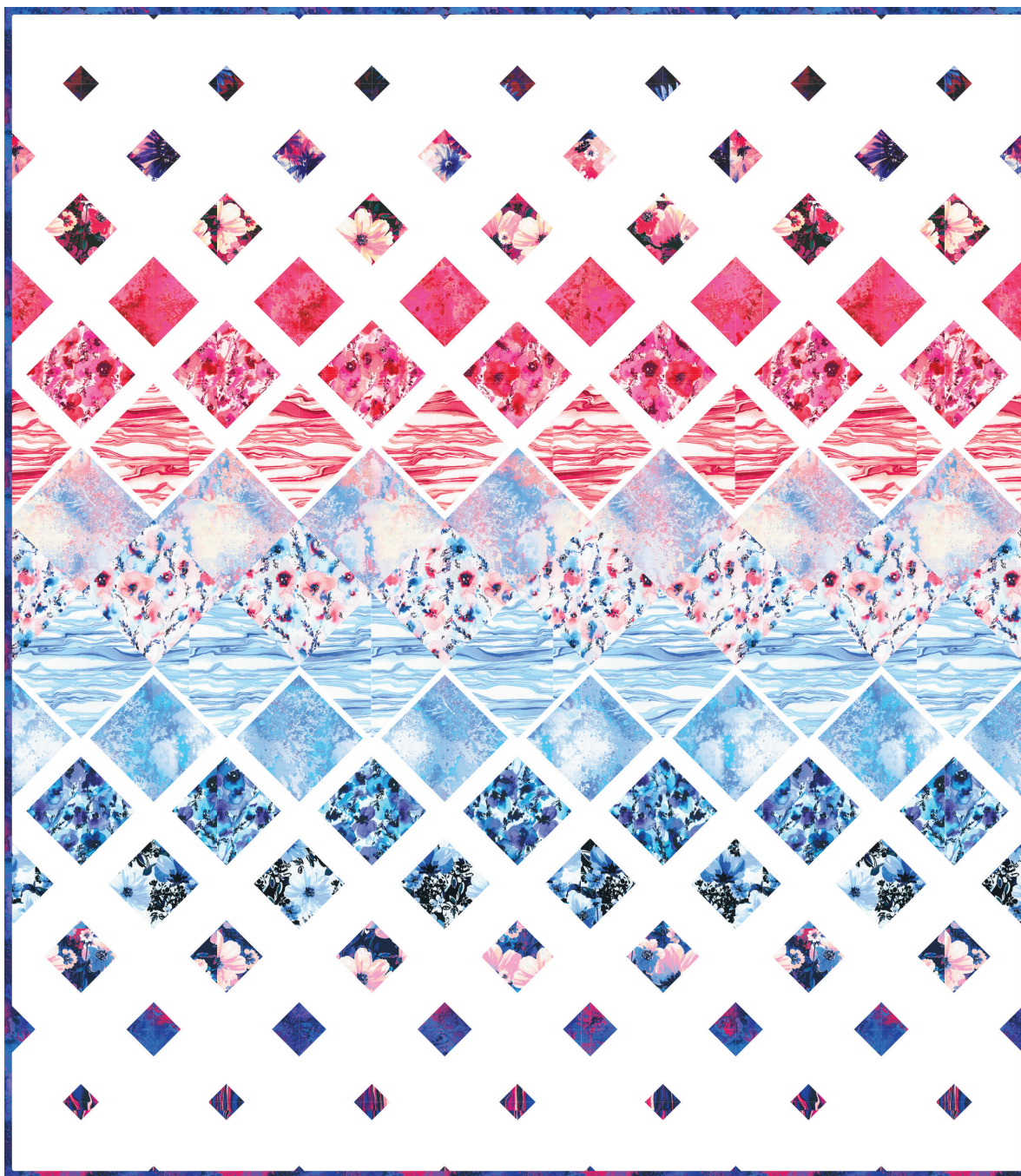
DOUBLE DIAMOND FADE

Designed by Elise Lea for RK
www.robertkaufman.com

Featuring *Wishwell*

¹⁹
Wild Blue

Vanessa Lillrose & Linda Fitch



Finished quilt measures: 56" x 60"

Difficulty Rating: **Intermediate**

ROBERTKAUFMAN
F A B R I C S

For questions about this pattern, please email Patterns@RobertKaufman.com.

Fabric and Supplies Needed

Fabric amounts based on yardage that is 42" wide.

Color	Fabric	Name/SKU	Yardage	Color	Fabric	Name/SKU	Yardage
	A	K001-1387 WHITE	2-3/4 yards		J	WELD-20244-75 DELFT	1/4 yard
	B	WELD-20245-245 MIST	1/3 yard		K	WELD-20244-109 MAGENTA	1/4 yard
	C	WELD-20247-216 CLOUD	1/3 yard		L	WELD-20244-235 HYACINTH	1/4 yard
	D	WELD-20246-390 BREEZE	1/3 yard		M	WELD-20241-106 BLOSSOM	1/4 yard
	E	WELD-20246-226 PEONY	1/3 yard		N	WELD-20247-74 SAPPHIRE	1/4 yard
	F	WELD-20247-63 SKY	3/8 yard		O	WELD-20243-69 MIDNIGHT	1/4 yard
	G	WELD-20245-301 AZALEA	3/8 yard		P	WELD-20246-228 LAPIS	1/8 yard
	H	WELD-20245-73 LAKE	1/3 yard		Binding*	WELD-20247-74 SAPPHIRE	1/2 yard
	I	WELD-20247-108 FUCHSIA	1/3 yard			<i>*Also used for Fabric N</i>	

You will also need:
3-5/8 yards for backing

Copyright 2021, Robert Kaufman

For individual use only - Not for resale

Notes Before You Begin

- Read through all of the instructions before beginning.
- All of the seam allowances are 1/4" unless otherwise noted.
- Press seam allowances open unless otherwise noted.
- Width of fabric (WOF) is equal to at least 42" wide.
- Right sides together has been abbreviated to RST.
- Remember to measure twice and cut once!

Cutting Instructions

From Fabric A, cut:

two 5" x WOF strips. Subcut:
fourteen 5" squares for the HSTs

nineteen 4-1/2" x WOF strips. Subcut:
one hundred sixty-eight 4-1/2" squares

From Fabric B, cut:

two 5" x WOF strips. Subcut:
fourteen 5" squares for the HSTs

From each of Fabrics C and D, cut:

two 5" x WOF strips. Subcut:
fourteen 5" squares for the HSTs

From each of Fabrics E and F, cut:

three 4" x WOF strips. Subcut:
twenty-eight 4" squares

From each of Fabrics G and H, cut:

three 3-1/2" x WOF strips. Subcut:
twenty-eight 3-1/2" squares

From each of Fabrics I and J, cut:

two 3" x WOF strips. Subcut:
twenty-eight 3" squares

From each of Fabrics K and L, cut:

two 2-1/2" x WOF strips. Subcut:
twenty-eight 2-1/2" squares

From each of Fabrics M and N, cut:

two 2" x WOF strips. Subcut:
twenty-eight 2" squares

From each of Fabrics O and P, cut:

one 1-1/2" x WOF strip. Subcut:
twenty-eight 1-1/2" squares

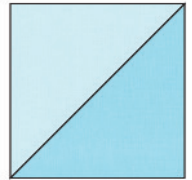
one 1" x WOF strip. Subcut:
fourteen 1" squares

From the Binding Fabric, cut:

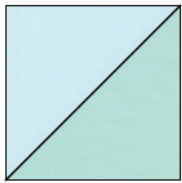
six 2-1/2" x WOF strips

Assemble the Half-Square Triangles (HSTs)

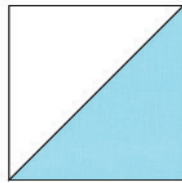
Step 1: Pair a 5" Fabric B square with a 5" Fabric C square, RST. Mark a diagonal line on the wrong side of one square. Sew 1/4" away from both sides of the marked line. Cut on the marked line, creating two half-square triangles (HSTs). Press toward the darker fabric. Trim to 4-1/2" square. Repeat to make fourteen B/C HSTs.



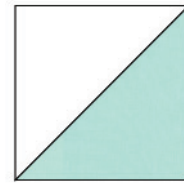
Step 2: Repeat Step 1 to make:



fourteen B/D HSTs



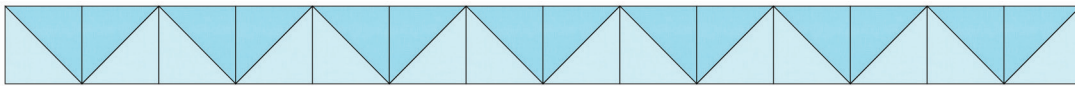
fourteen A/C HSTs



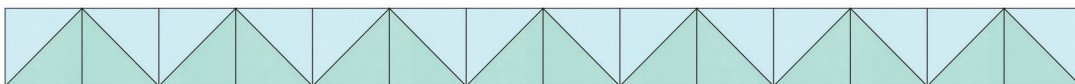
fourteen A/D HSTs

Assemble the Rows

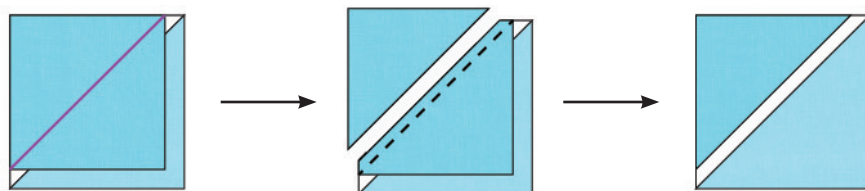
Step 3: Sew the B/C HSTs together, as shown, to form Row 8. Press the seams to the right.



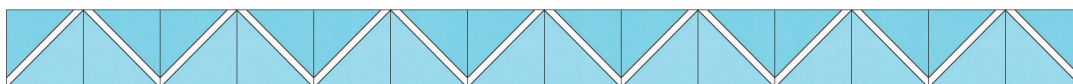
Step 4: Sew the B/D HSTs together, as shown, to form Row 9. Press the seams to the left.



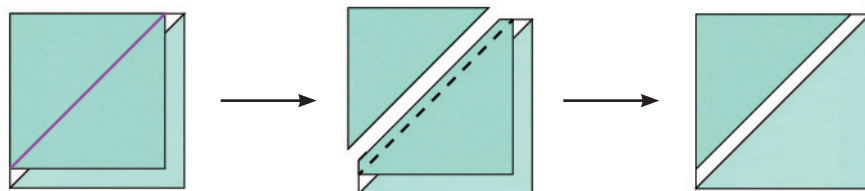
Step 5: Position an A/C HST with the C fabric on the lower right. Place a 4" Fabric E square in the upper left corner of the HST, right sides together. Note the orientation of the marked diagonal line. Sew on the marked line, then trim away the excess fabric, leaving a 1/4" seam allowance. Press. Repeat to make fourteen units like this.



Sew all fourteen units together, as shown, to make Row 7. Press the seams to the left.



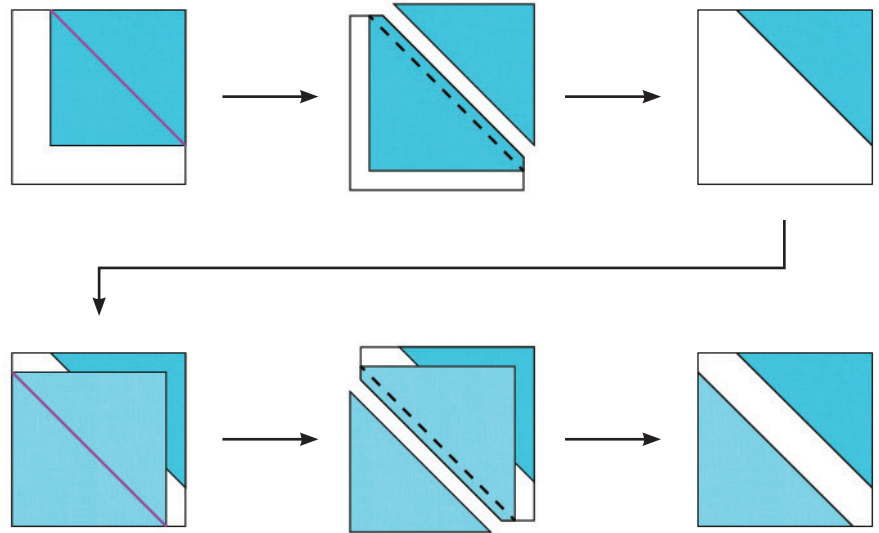
Step 6: Position an A/D HST with the D fabric on the lower right. Place a 4" Fabric F square in the upper left corner of the HST, right sides together. Note the orientation of the marked diagonal line. Sew on the marked line, then trim away the excess fabric, leaving a 1/4" seam allowance. Press. Repeat to make fourteen units like this.



Sew all fourteen units together, as shown, to make Row 10. Press the seams to the right.



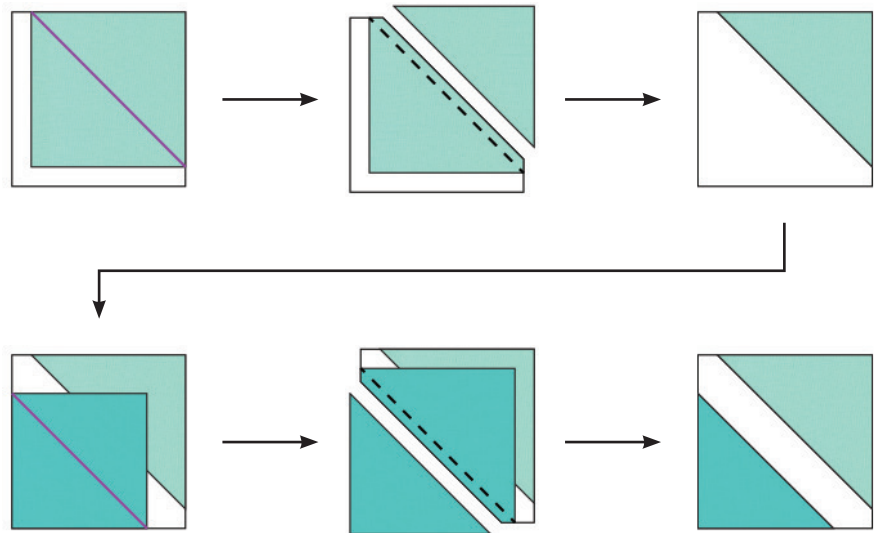
Step 7: Place a Fabric G square in the upper right corner of a Fabric A square, right sides together. Note the orientation of the marked diagonal line. Sew on the marked line, then trim away the excess fabric, leaving a 1/4" seam allowance. Press. Repeat on the lower left corner with a Fabric E square. Press. Repeat to make fourteen units like this.



Sew all fourteen units together, as shown, to make Row 6. Press the seams to the right.

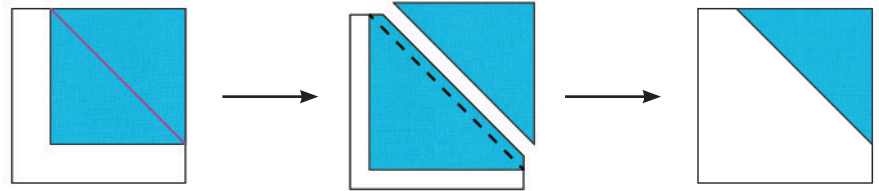


Step 8: Repeat the process in Step 7 using Fabric F and H squares on a Fabric A square to make fourteen units.

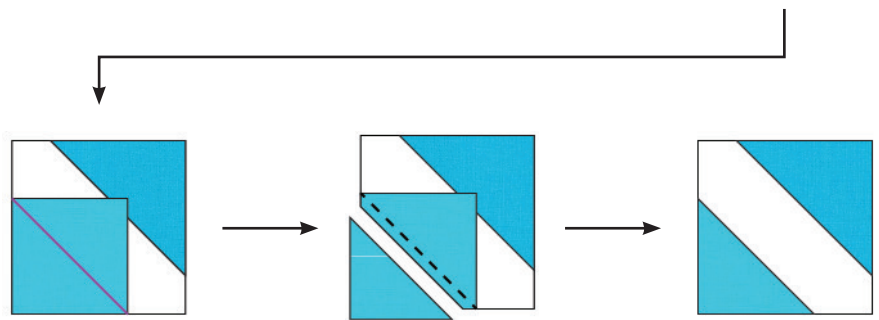


Sew all fourteen units together, as shown, to make Row 11. Press the seams to the left.

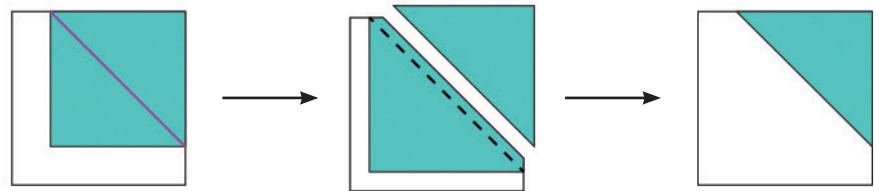
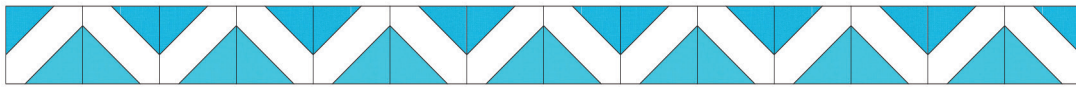




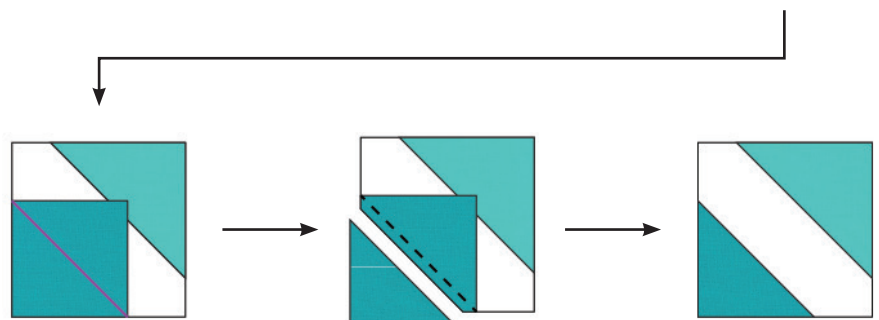
Step 9: Repeat the process in Step 7 using Fabric G and I squares on a Fabric A square to make fourteen units.



Sew all fourteen units together, as shown, to make Row 5. Press the seams to the left.



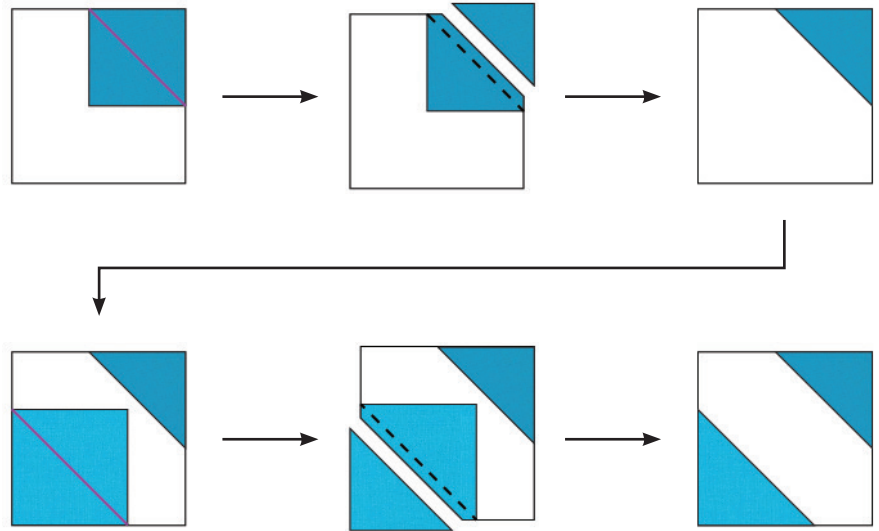
Step 10: Repeat the process in Step 7 using Fabric H and J squares on a Fabric A square to make fourteen units.



Sew all fourteen units together, as shown, to make Row 12. Press the seams to the right.



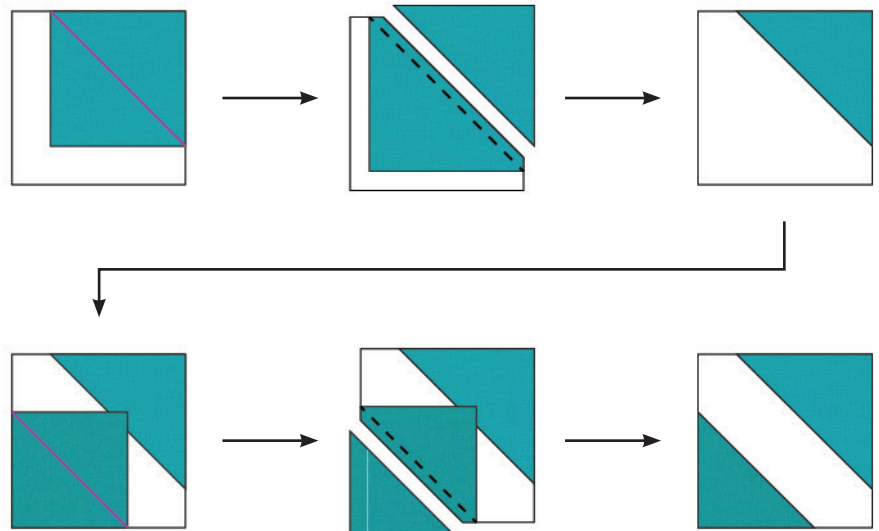
Step 11: Repeat the process in Step 7 using Fabric K and I squares on a Fabric A square to make fourteen units.



Sew all fourteen units together, as shown, to make Row 4. Press the seams to the right.

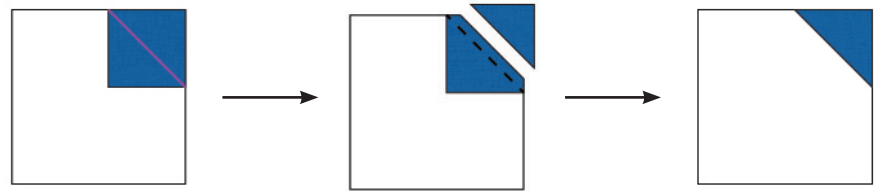


Step 12: Repeat the process in Step 7 using Fabric J and L squares on a Fabric A square to make fourteen units.

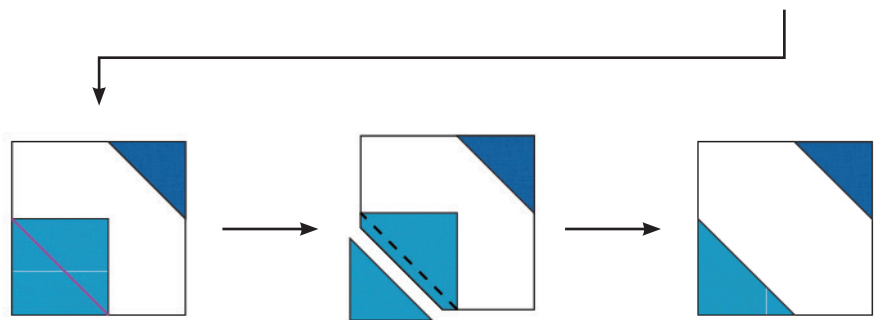


Sew all fourteen units together, as shown, to make Row 13. Press the seams to the left.

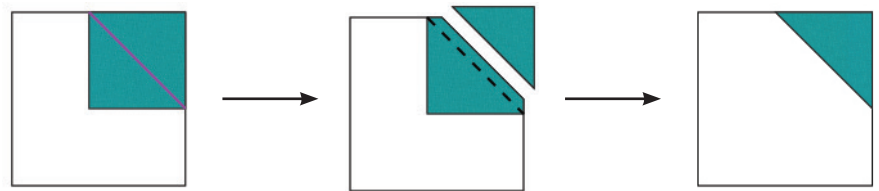




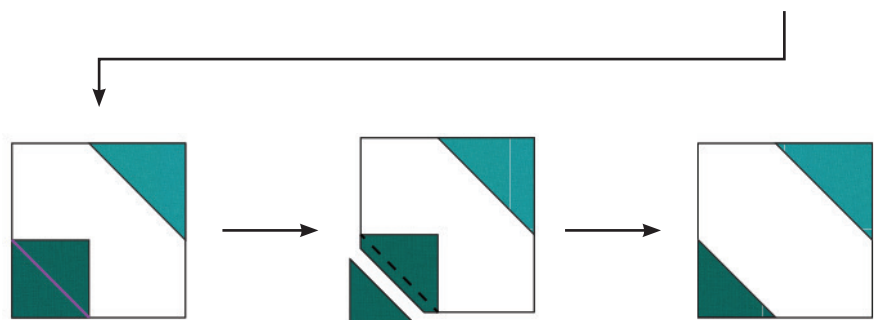
Step 13: Repeat the process in Step 7 using Fabric K and M squares on a Fabric A square to make fourteen units.



Sew all fourteen units together, as shown, to make Row 3. Press the seams to the left.



Step 14: Repeat the process in Step 7 using Fabric L and N squares on a Fabric A square to make fourteen units.

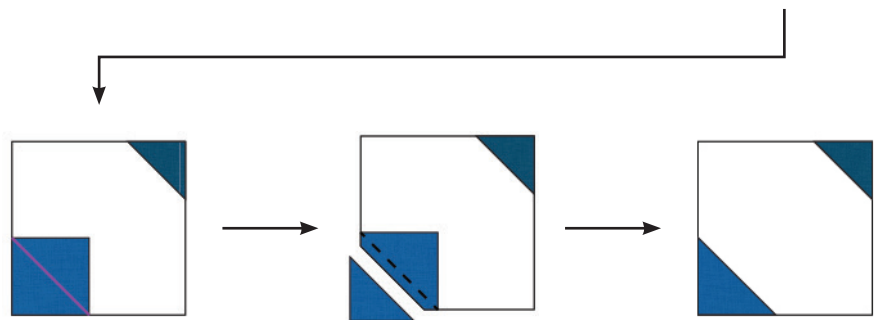


Sew all fourteen units together, as shown, to make Row 14. Press the seams to the right.





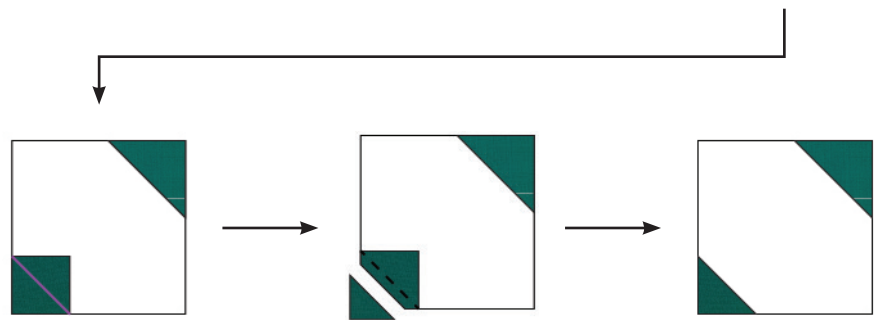
Step 15: Repeat the process in Step 7 using Fabric M and O squares on a Fabric A square to make fourteen units.



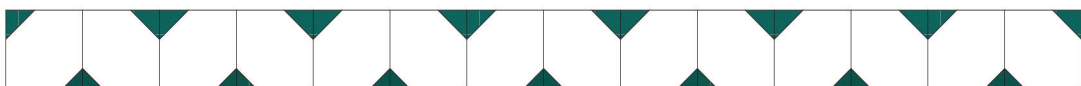
Sew all fourteen units together, as shown, to make Row 2. Press the seams to the right.



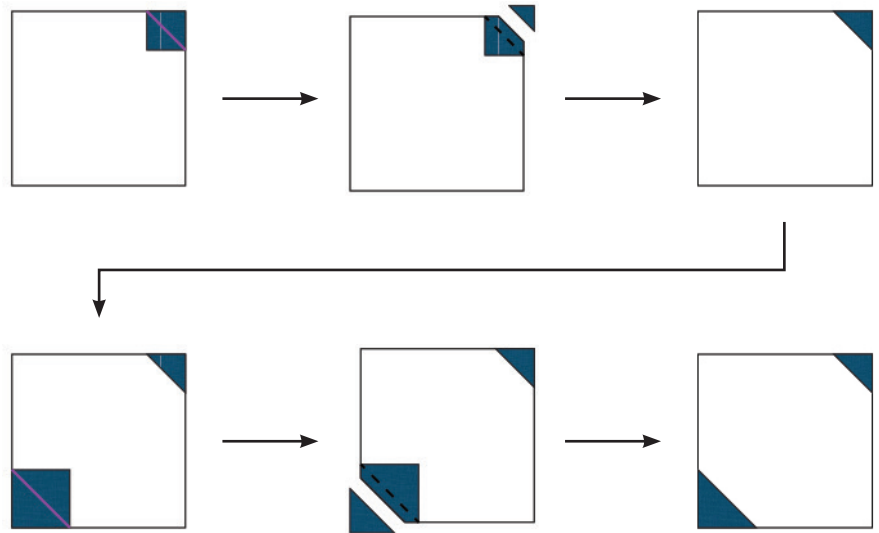
Step 16: Repeat the process in Step 7 using Fabric N and P squares on a Fabric A square to make fourteen units.



Sew all fourteen units together, as shown, to make Row 15. Press the seams to the left.



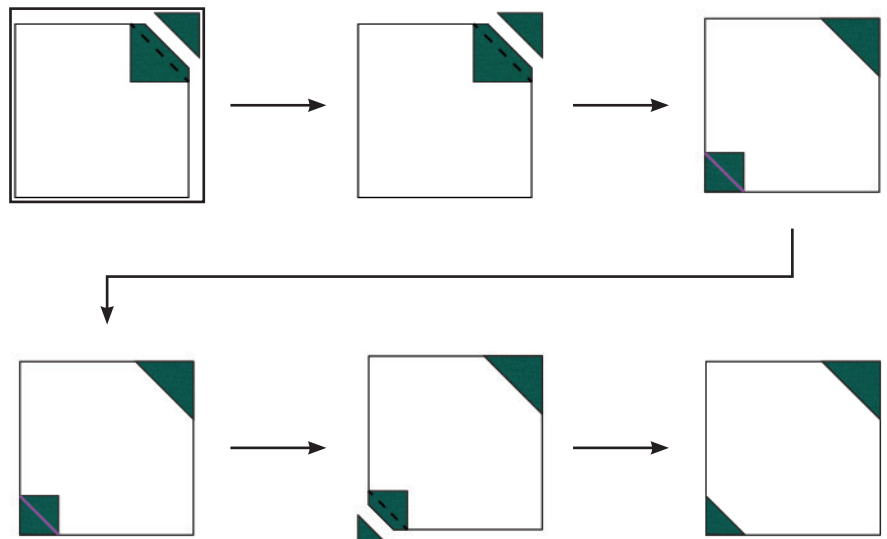
Step 17: Repeat the process in Step 7 using a 1-1/2" Fabric O square in one corner and a 1" Fabric O square in the opposite corner of a Fabric A square to make fourteen units.



Sew all fourteen units together, as shown, to make Row 1. Press the seams to the left.



Step 18: Repeat the process in Step 7 using a 1-1/2" Fabric P square in one corner and a 1" Fabric P square in the opposite corner of a Fabric A square to make fourteen units.



Sew all fourteen units together, as shown, to make Row 16. Press the seams to the left.

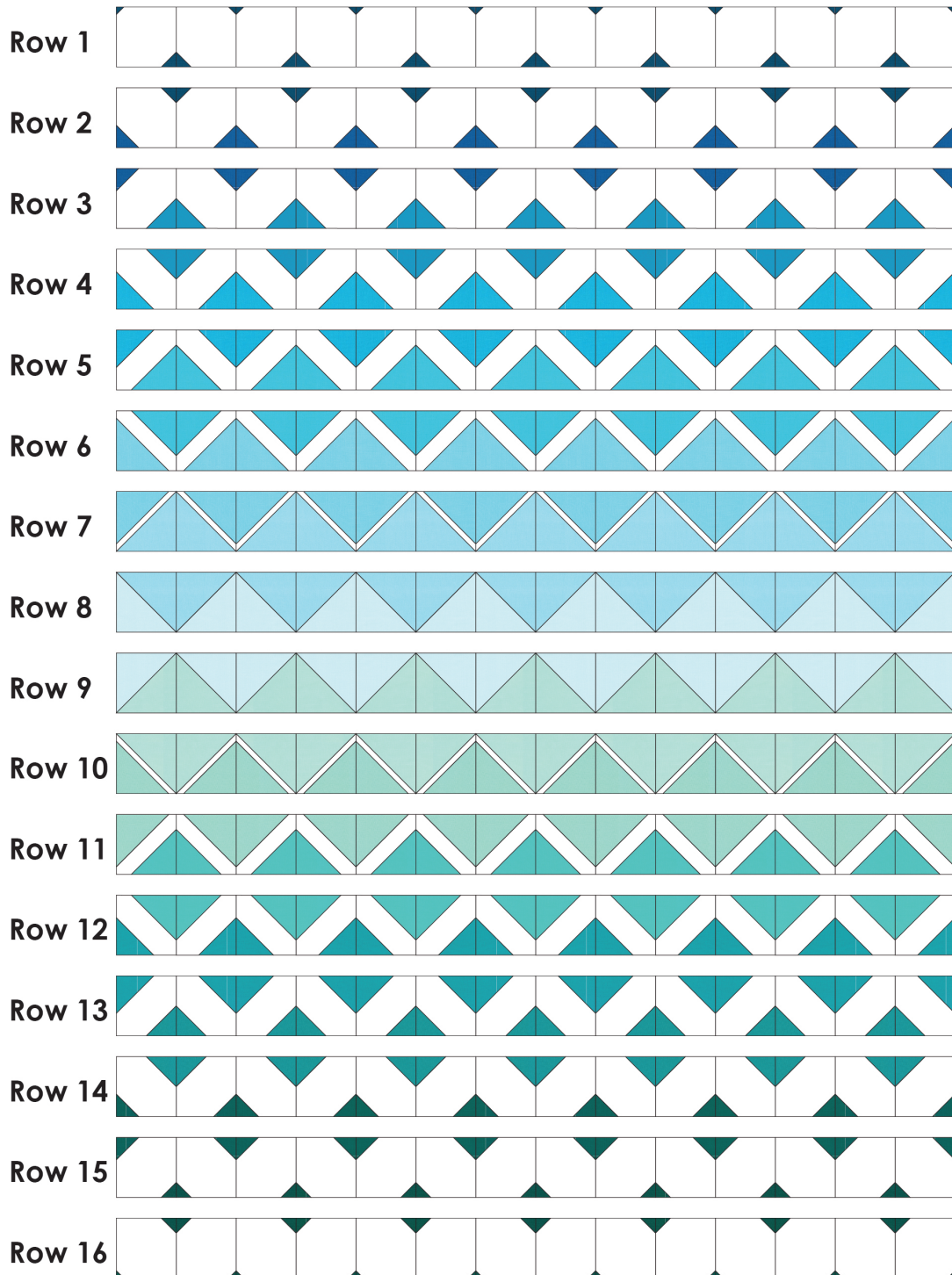


Assemble the Quilt

Step 19: Arrange the rows in order from 1-16. Note the fabric placement and row orientation in the Quilt Assembly Diagram.

Step 20: Sew the rows together to form the quilt center. Press the row seams open.

Your quilt top is complete! Baste, quilt, bind and enjoy!



This pattern may be used for personal purposes only and may not be reproduced in any form without the express permission from Robert Kaufman Fabrics. This pattern is not for resale. All patterns, unless otherwise attributed, are © Robert Kaufman Co., Inc. 2005-2021. All rights reserved.