

ICE CREAM & DOMINOES

Designed by Suzanne Paquette of Atelier
www.ateliersixdesign.com

Featuring

KONA[®]
cotton solids



Finished quilt measures: 50" X 63"

Pattern Level: Experienced Intermediate







"I know the ropes and would like to test my skills!"

ROBERTKAUFMAN
F A B R I C S

For questions about this pattern, please email Patterns@RobertKaufman.com.

Fabric and Supplies Needed

Fabric amounts based on yardage that is 40" wide.

Color	Fabric	Name/SKU	Yardage	Color	Fabric	Name/SKU	Yardage
	A	K001-1339 SNOW	1-1/2 yards		E	K001-295 GRAPHITE	1/2 yard
	B	K001-200 POND	1/2 yard		F	K001-408 IRON	3/4 yard
	C	K001-359 PEPPER	1/2 yard		G	K001-1333 SILVER	1/2 yard
	D	K001-550 HIGHLIGHT	3/4 yard	You will also need: 3-1/2 yards for backing 5/8 yard for binding			

Copyright 2017, Robert Kaufman
For individual use only - Not for resale

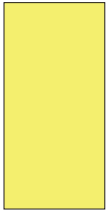
Notes Before You Begin

- Read through all of the instructions before beginning.
- All of the seam allowances are 1/4" unless otherwise noted.
- Press seam allowances open unless otherwise noted.
- Width of fabric (WOF) is equal to at least 40" wide.
- Right sides together has been abbreviated to RST.
- Remember to measure twice and cut once!

Cutting Instructions

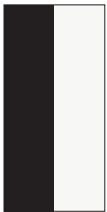
Tip: in order to make fabric cutting and piecing easier, label each fabric by color name and letter.

Block A



- Cut one 10-1/2" x 21-1/2" rectangle each in:
 - Fabric C
 - Fabric D
 - Fabric G

Block B



- Cut one 5-1/2" x 21-1/2" rectangle in:
 - Fabric B
 - Fabric C
 - Fabric E
- Cut three 5-1/2" x 21-1/2" rectangles in:
 - Fabric A

Block C



- Cut one 10-1/2" x 16-1/2" rectangle each in:
 - Fabric B
 - Fabric F
- Cut two 10-1/2" x 5-1/2" rectangles in:
 - Fabric A

Block D



- Cut one 10-1/2" x 9-1/2" rectangle each in:
 - Fabric B
 - Fabric E
- Because the length and width are just slightly different, use a fabric marking pen to label the measurements on the edges of these pieces to aid in piecing later.
- Cut one 10-1/2" x 11" rectangle each in:
 - Fabric C
 - Fabric G
- Indicate measurements of length and width with painter's tape to indicate the two different measurements
- Cut two 10-1/2" x 2" rectangles in:
 - Fabric A

Block E

- Cut two Template 1 from Fabric A



- Cut two Template 1-reversed from Fabric A
- Cut one Template 1 from Fabric F
- Cut one Template 1-reversed from Fabric F
- Cut one Template 1 from Fabric E
- Cut one Template 1-reversed from Fabric D

Block F



- Cut 6 strips 22" long x 2-3/4" wide in:
Fabric A
- Cut five strips 22" long x 2-3/4" wide in:
Fabric D

Sewing the Quilt Top

1. Piece **Block B** by placing RST, along the 21-1/2" edge, of:
 - one 5-1/2" x 21-1/2" rectangle in Fabric A and
 - one 5-1/2" x 21-1/2" rectangle in Fabric E.

Stitch along the 21-1/2" edge and press seams open. Repeat this process by pairing:

- one 5-1/2" x 21-1/2" rectangle in Fabric A with
- one 5-1/2" x 21-1/2" rectangle in Fabric C, and
- one 5-1/2" x 21-1/2" rectangle in Fabric A with
- one 5-1/2" x 21-1/2" rectangle in Fabric B.

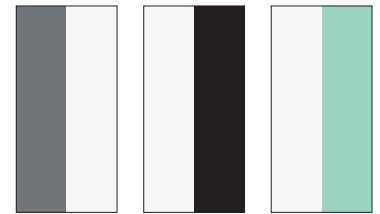


Diagram 1:
Block B variations

When completed, you will have three units of Block B (see Diagram 1).

2. Piece **Block C** by placing RST, along the 10-1/2" edge, of:
 - one 10-1/2" x 5-1/2" rectangle in Fabric A and
 - one 10-1/2" x 16-1/2" rectangle in Fabric B.

Stitch along the 10-1/2" edge and press seams open.

Repeat this process by pairing:

- one 10-1/2" x 5-1/2" rectangle in Fabric A with
- one 10-1/2" x 16-1/2" rectangle in Fabric F.

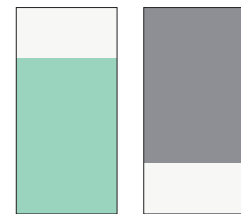


Diagram 2:
Block C variations

When completed, you will have 2 units of Block C (See Diagram 2).

3. Piece **Block D** by placing RST, along the 10-1/2" edges (with the rectangle in Fabric A placed in the middle), of:
- one 10-1/2" x 11" rectangle in Fabric G,
 - one 10-1/2" x 2" rectangle in Fabric A and
 - one 10-1/2" x 9-1/2" rectangle in Fabric B.

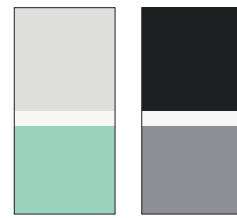


Diagram 3:
Block D variations

Stitch along the 10-1/2" edges and press seams open.

Repeat this process for the second variation of Block D using:

- one 10-1/2" x 11" rectangle in Fabric C,
- one 10-1/2" x 2" rectangle in Fabric A and
- one 10-1/2" x 9-1/2" rectangle in Fabric E.

When completed, you will have 2 units of **Block D** (See Diagram 3).

4. Piece **Block E-1** by placing RST, along the 24" bias edge (as shown in Diagram 4), of:
- one triangle in Fabric E, with right angle corner in top right, and
 - one triangle in Fabric A.

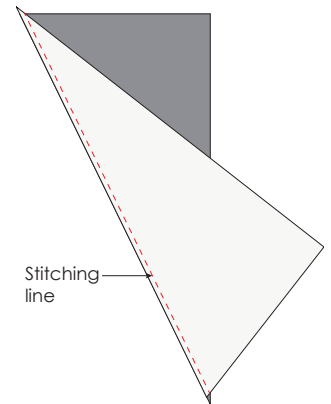


Diagram 4:
RST Placement of
pieces for Blocks E-1
and E-2

Stitch along the 24" bias edge, and press seams open. Trim to 10-1/2" x 21-1/2", if necessary.

Repeat this process, for the other variations of **Block E** (see Diagram 5), using the following combinations:

Block E-2

- one triangle in Fabric F, with right angle corner in top right, and
 - one triangle in Fabric A.
- (When block is sewn, rotating the block 180 degrees will give the configuration shown in Diagram 5).

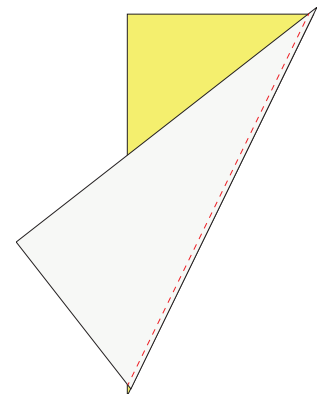


Diagram 4a:
RST Placement of
pieces for Blocks E-3
and E-4

See Diagram 4A for RST placement for Block E-3 and E-4.

Block E-3

- one triangle in Fabric D, with right angle corner in top left, and
- one triangle in Fabric A.

Block E-4

- one triangle in Fabric E, with right angle corner in top left, and
- one triangle in Fabric A.

(When block is sewn, rotating the block 180 degrees will give the configuration shown in Diagram 5).

When completed, you will have 4 units of **Block E** (See Diagram 5).

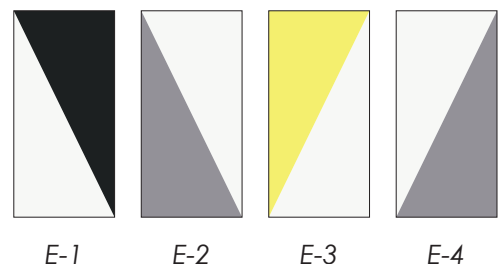


Diagram 5:
Block E Variations

5. Piece Block F by placing RST alternating strips in
 - Fabric A (six 22" x 2-3/4" strips) and
 - Fabric D (five 22" x 2-3/4" strips)
 as shown in Diagram 6.

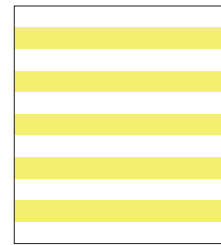


Diagram 6:
Strip placement for Block F

Stitch along the 22" edges and press seams open. Finished block should be 22" x 25-1/4".

Using Appendix A as a guide for the angle of the stripes, trace a 10-1/2" x 21-1/2" rectangle on the right side of the striped block just created. Stripes should be at approximately a 35 degree angle. (See Diagram 7).

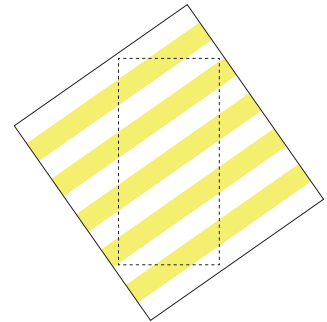


Diagram 7:
Cutting line for Block F

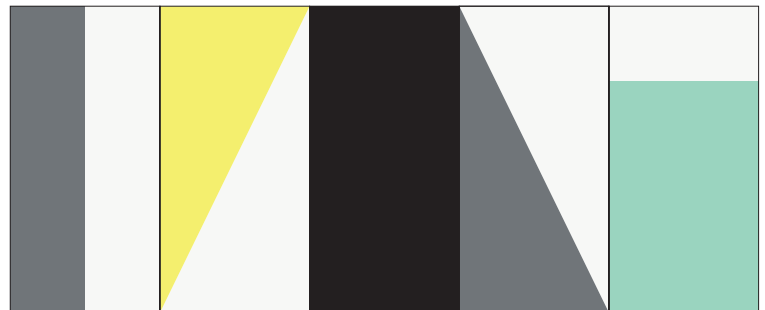
Stay stitch 1/8" inside cutting line to secure seams before cutting.

Then, using a rotary cutter, cut out rectangle on cutting line.

Assemble the Quilt

6. Arrange the blocks into three rows of five blocks. Note the fabric placement and block orientation in the Quilt Assembly Diagram.

Row 1



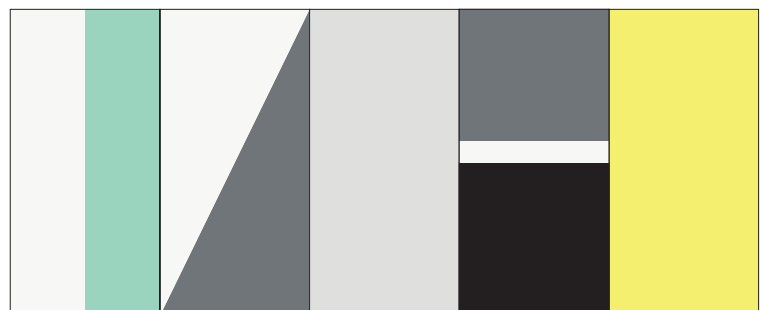
7. Sew the blocks together to form rows. Press the rows to the left in the odd numbered rows and to the right in the even numbered rows.

Row 2



8. Sew the rows together to form the quilt center. Press the row seams open.

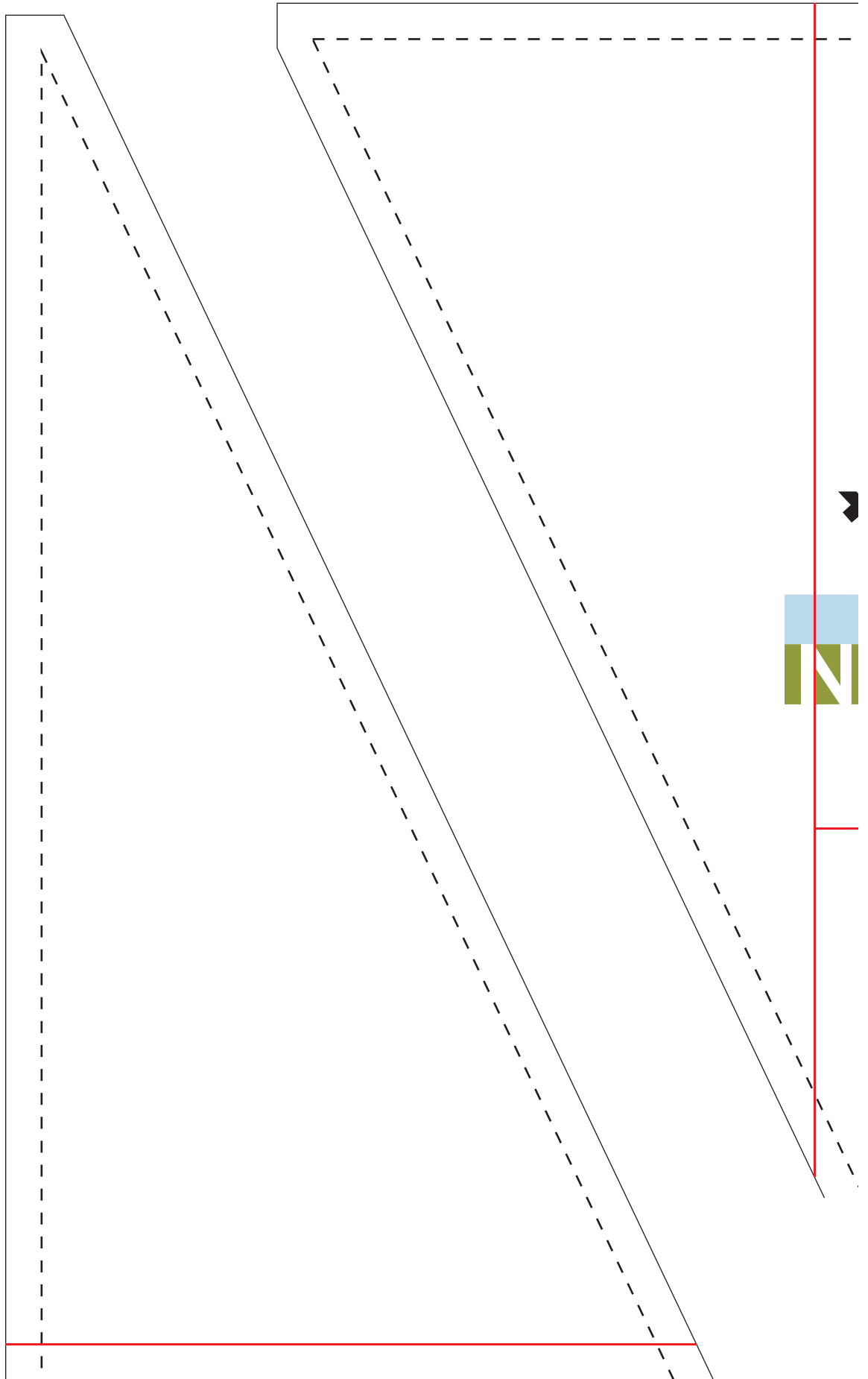
Row 3



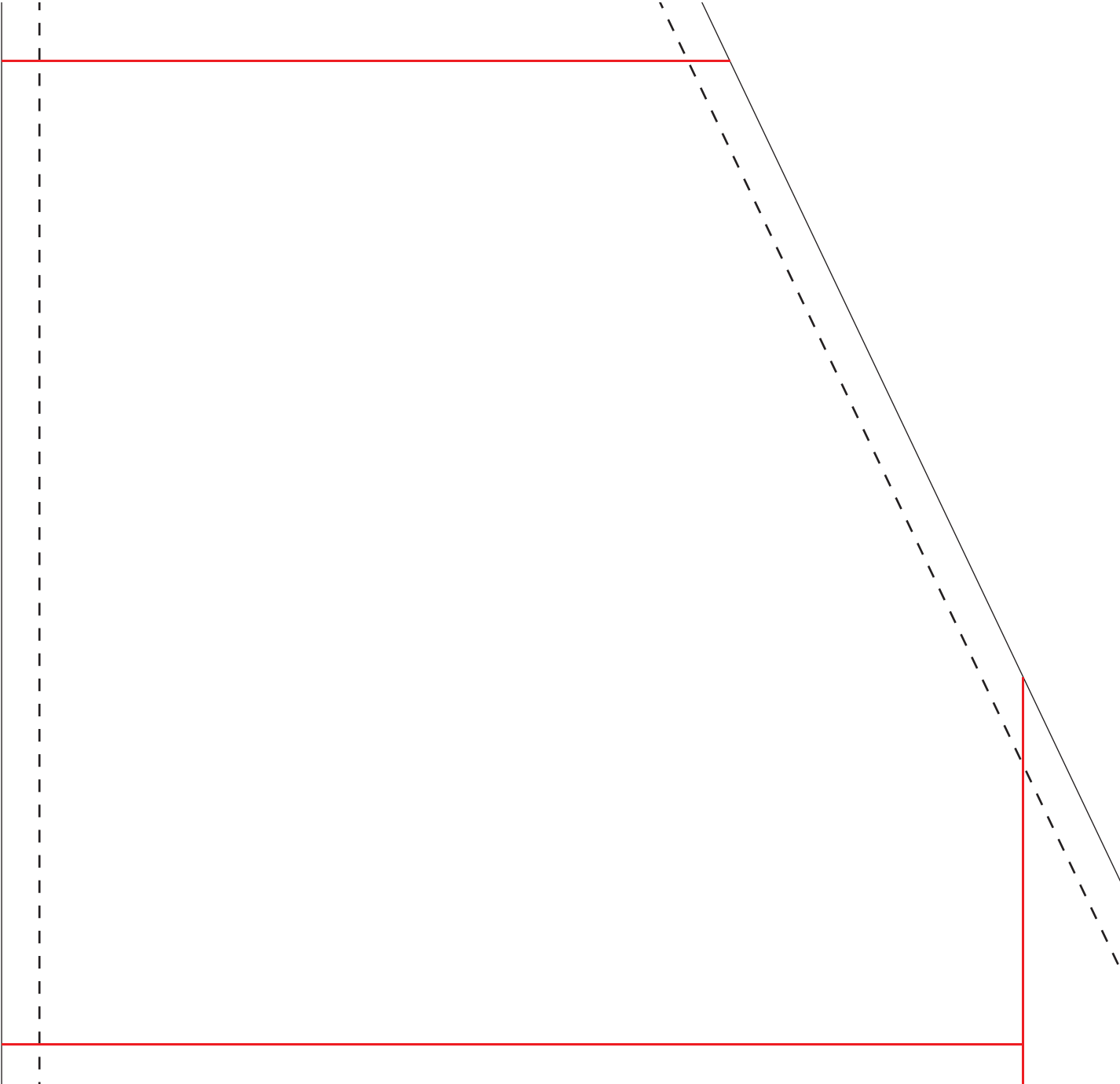
Your quilt top is complete! Baste, quilt, bind and enjoy!

Templates

Print at 100%.



1" box for
scale



1" box for
scale

ROBERT KAUFMAN
F A B R I C S

**ICE CREAM &
DOMINOES
TEMPLATE 1**

ROBERT KAUFMAN
F A B R I C S

ICE CREAM & DOMINOES

APPENDIX A
STRIPE ORIENTATION GUIDE