

MALCESINE ON LAKE GARDA

Designed by Elise Lea for RK
www.robertkaufman.com

Featuring **GUSTAV KLIMT**



Finished quilt measures: 56" x 66"







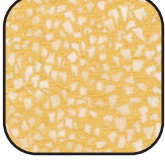
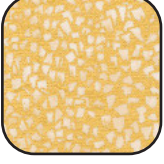
Difficulty Rating: **Beginner**

ROBERTKAUFMAN
F A B R I C S

For questions about this pattern, please email Patterns@RobertKaufman.com.

Fabric and Supplies Needed

Fabric amounts based on yardage that is 42" wide.

Color	Fabric	Name/SKU	Yardage	Color	Fabric	Name/SKU	Yardage
	A	SRKM-18656-73 LAKE	1-1/4 yards		E	SRKM-17181-13 TAN	1/4 yard
	B	K001-1242 NATURAL	1/2 yard		F	SRKM-21350-133 GOLD	1/4 yard
	C	SRKM-18657-40 EMERALD	1/4 yard		G	SRKDM-22727-72 COBALT	1-1/8 yards
	D	SRKM-18657-15 IVORY	1/4 yard		Binding*	SRKM-18657-15 IVORY	5/8 yard
<p>Copyright 2024, Robert Kaufman For individual use only - Not for resale</p>				<p>You will also need: 3-5/8 yards for backing</p>			

**Also used for Fabric D*

Notes Before You Begin

- Read through all of the instructions before beginning.
- All of the seam allowances are 1/4" unless otherwise noted.
- Press seam allowances open unless otherwise noted.
- Width of fabric (WOF) is equal to at least 42" wide.
- Right sides together has been abbreviated to RST.
- Remember to measure twice and cut once!

Cutting Instructions

From Fabric A, cut:

one 44-1/2" x WOF strip. Subcut:
one 34-1/2" x 44-1/2" rectangle

From Fabric B, cut:

nine 1-1/2" x WOF strips. Subcut:
two 1-1/2" x 36-1/2" top/bottom inner borders
Sew the seven remaining strips together, end-to-end, then subcut:
two 1-1/2" x 54-1/2" side middle borders
two 1-1/2" x 46-1/2" top/bottom middle borders
two 1-1/2" x 44-1/2" side inner borders

From each of Fabrics C-F, cut:

two 2-1/2" x WOF strips

From Fabric G, cut:

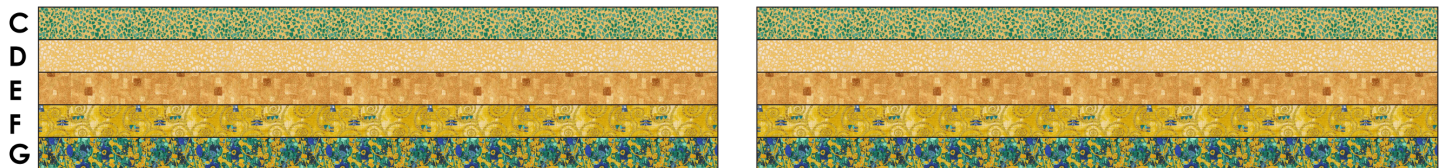
six 5-1/2" x WOF strips across the remaining WOF. Sew the strips together, end-to-end. Subcut:
two 5-1/2" x 56-1/2" top/bottom outer borders
two 5-1/2" x 56-1/2" side outer borders
two 2-1/2" x WOF strips

From the Binding Fabric, cut:

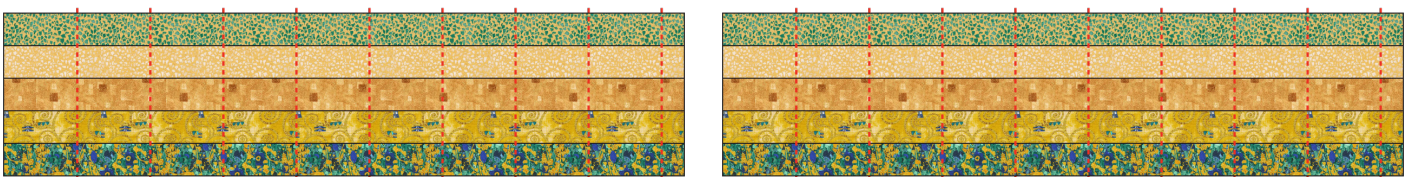
seven 2-1/2" x WOF strips

Assemble the Strip Sets

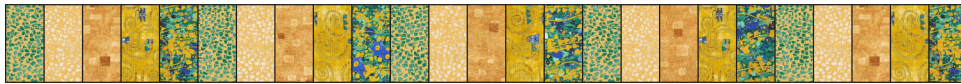
Step 1: Sew one 2-1/2" Fabric C strip, one 2-1/2" Fabric D strip, one 2-1/2" Fabric E strip, one 2-1/2" Fabric F strip, and one 2-1/2" Fabric G strip together in that order. Press. Make two strip sets.



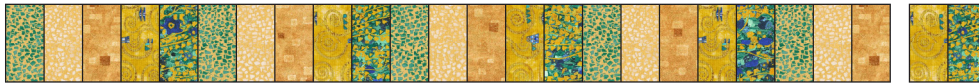
Step 2: Cut each strip set into nine 4-1/2" segments.



Step 3: Sew five segments together as shown. Press.



Step 4: Use a seam ripper to carefully remove the last two rectangles of the strip. Set these rectangles aside for now.



Step 5: Repeats Steps 3-4 to make a second side pieced border.



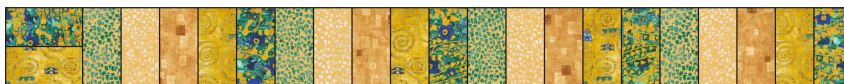
Step 6: Sew four segments together as shown. Press.



Step 7: Sew one of the two rectangle sets you removed from the side borders in Step 4 to the left end of the row as shown. Press.



Step 8: Repeat Steps 6-7 to make a second top/bottom pieced border.



Assemble the Quilt

Step 9: Sew the side inner borders to the sides of the Fabric A rectangle. Press toward the borders. Sew the top and bottom inner borders to the quilt center. Press toward the borders.

Step 10: Sew the side pieced borders to the sides of the quilt center. Press toward the borders. Sew the top and bottom pieced borders to the quilt center. Press toward the borders.

Step 11: Sew the side middle borders to the sides of the Fabric A rectangle. Press toward the borders. Sew the top and bottom middle borders to the quilt center. Press toward the borders.

Step 12: Sew the side outer borders to the sides of the quilt center. Press toward the borders. Sew the top and bottom outer borders to the quilt center. Press toward the borders.



Your quilt top is complete! Baste, quilt, bind, and enjoy!

This pattern may be used for personal purposes only and may not be reproduced in any form without the express permission from Robert Kaufman Fabrics. This pattern is not for resale. All patterns, unless otherwise attributed, are © Robert Kaufman Co., Inc. 2005-2024. All rights reserved.