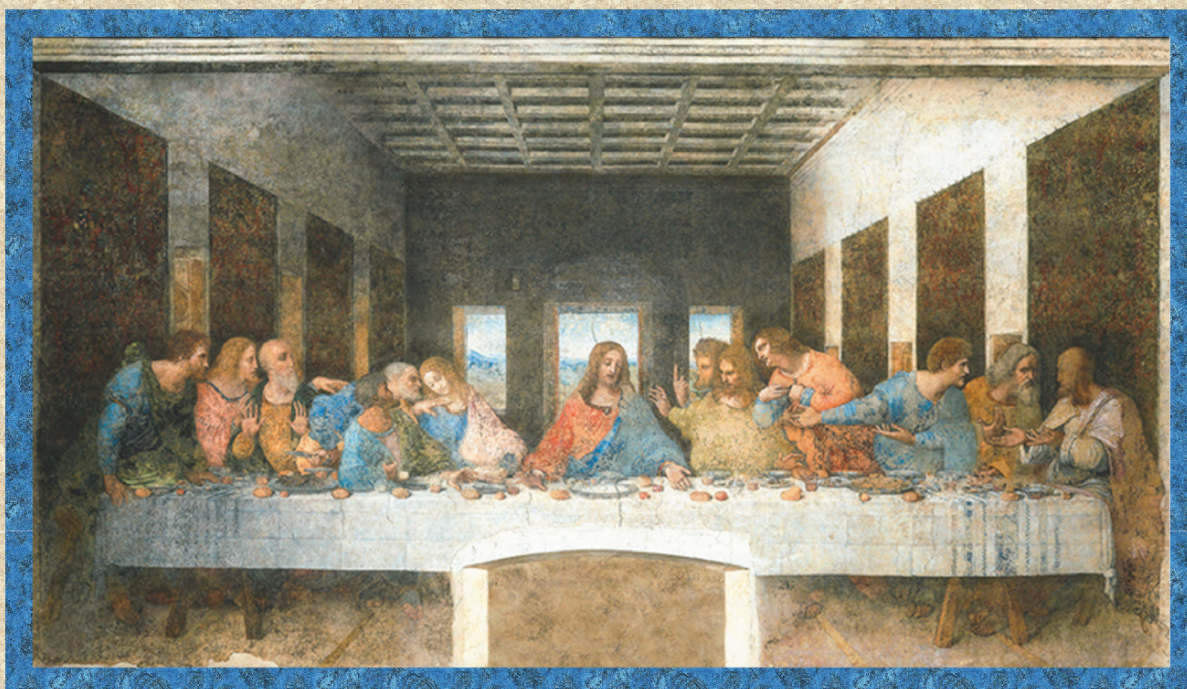


# THE LAST SUPPER

Designed by Ariga Mahmoudlou for RK  
[www.robertkaufman.com](http://www.robertkaufman.com)

Featuring **LEONARDO  
DA VINCI** STUDIO 



Finished quilt measures: 52-1/2" x 34"

Difficulty Rating: **Beginner**

**ROBERTKAUFMAN**  
F A B R I C S

*For questions about this pattern, please email [Patterns@RobertKaufman.com](mailto:Patterns@RobertKaufman.com).*

## Fabric and Supplies Needed

Fabric amounts based on yardage that is 42" wide.

Color	Fabric	Name/SKU	Yardage	Color	Fabric	Name/SKU	Yardage
	A	SRKD-20095-199 ANTIQUE	2/3 yard (one full panel)		D	SRKD-20100-142 AMBER	1/3 yard
	B	SRKD-20101-4 BLUE	1/4 yard		Binding*	SRKD-20101-184 CHARCOAL	3/8 yard
	C	SRKD-20101-14 NATURAL	1/2 yard	<p>You will also need: 1-3/4 yard for backing</p>			

Copyright 2020, Robert Kaufman  
For individual use only - Not for resale

## Notes Before You Begin

- Read through all of the instructions before beginning.
- All of the seam allowances are 1/4" unless otherwise noted.
- Press seam allowances open unless otherwise noted.
- Width of fabric (WOF) is equal to at least 42" wide.
- Right sides together has been abbreviated to RST.
- Remember to measure twice and cut once!

## Cutting Instructions

### From Fabric A, fussy cut:

one 42" x 23-1/2" center panel

### From Fabric B, cut:

four 1-1/2" x WOF strips. Sew together, end-to-end, then trim:

two 1-1/2" x 23-1/2" side inner borders

two 1-1/2" x 44" top/bottom inner borders

### From Fabric C, cut:

four 3-1/2" x WOF strips. Sew together, end-to-end, then trim:

two 3-1/2" x 25-1/2" side middle borders

two 3-1/2" x 50" top/bottom middle borders

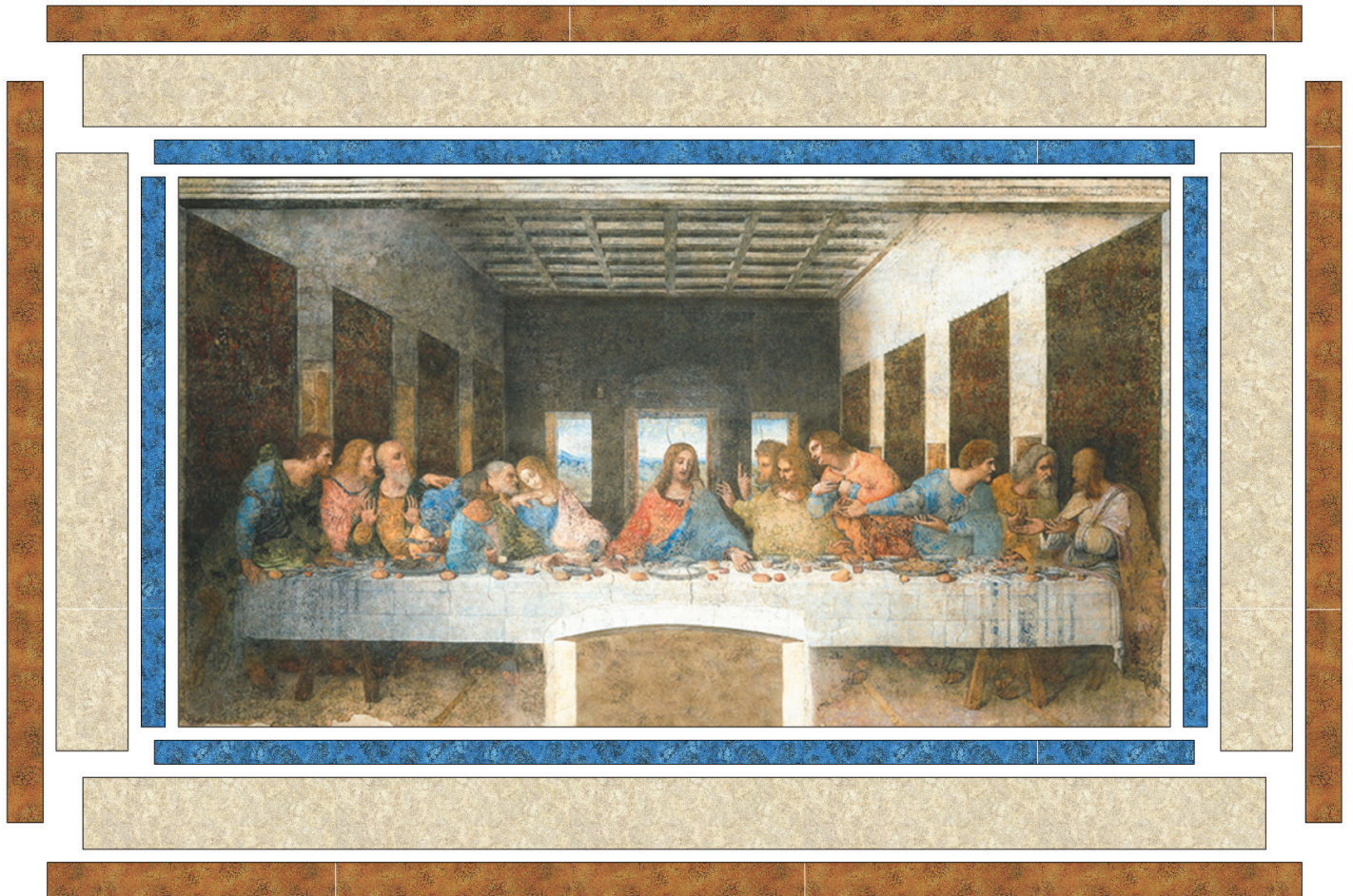
**From Fabric D, cut:**

five 2" x WOF strips. Sew together, end-to-end, then trim:  
two 2" x 31-1/2" side outer borders  
two 2" x 53" top/bottom outer borders

**From the Binding Fabric, cut:**

five 2-1/2" x WOF strips

## Assemble the Quilt



**Step 1:** Sew the side inner borders to the sides of the quilt center. Press toward the borders. Sew the top and bottom inner borders to the quilt center. Press toward the borders.

**Step 2:** Sew the side middle borders to the sides of the quilt center. Press toward the borders. Sew the top and bottom middle borders to the quilt center. Press toward the borders.

**Step 3:** Sew the side outer borders to the sides of the quilt center. Press toward the borders. Sew the top and bottom outer borders to the quilt center. Press toward the borders.

Your quilt top is complete! Baste, quilt, bind and enjoy!

This pattern may be used for personal purposes only and may not be reproduced in any form without the express permission from Robert Kaufman Fabrics. This pattern is not for resale. All patterns, unless otherwise attributed, are © Robert Kaufman Co., Inc. 2005-2020. All rights reserved.